

4

3

2

1

THIS DRAWING IS UNPUBLISHED.
DIFFUSION RESTREINTE

RELEASED FOR PUBLICATION
LIBRE A LA DIFFUSION

2011

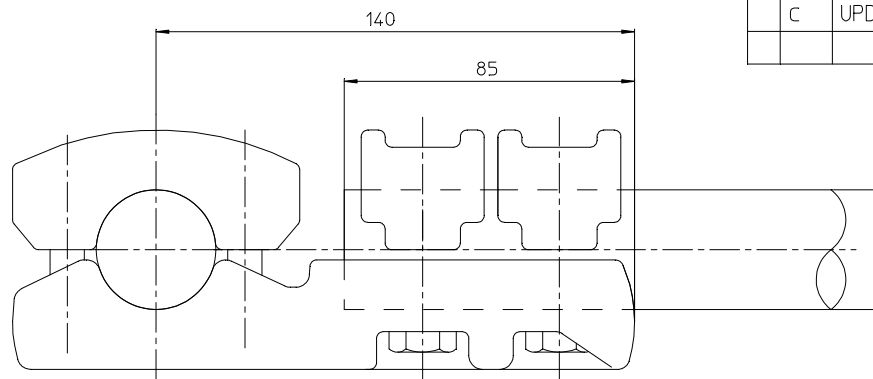
© COPYRIGHT 2011

by Tyco Electronics Corporation

ALL RIGHTS RESERVED.
TOUS DROITS RESERVES

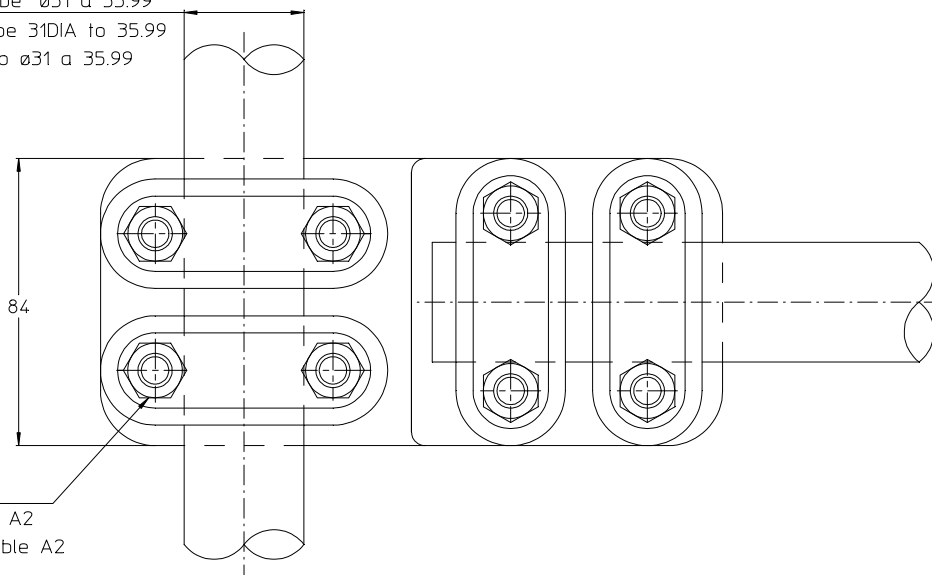
LOC	DIST
-	-

P		LTR REV	DESCRIPTION MODIFICATIONS	DATE	DWN DESS	APVD APPR
	B	FJ0031		16-Jan-98	SM	HV
	C		UPDATED DRAWING	19-Mar-13	PG	-




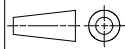
Cable ou tube ø31 à 35.99
 Cable or tube 31DIA to 35.99
 Cable o tubo ø31 a 35.99

Cable ou tube ø31 à 35.99
 Cable or tube 31DIA to 35.99
 Cable o tubo ø31 a 35.99



37 Nm

- 8 Boulons ø10 Acier Inox A2
- 8 Bolts 10DIA Stainless steel A2
- 8 Tornillos ø10 Acero inoxidable A2

THIS DRAWING IS A CONTROLLED DOCUMENT. <small>LE PLAN EST UN DOCUMENT CONTRÔLÉ PAR TYCO ELECTRONICS CORPORATION IL EST SUSCEPTIBLE D'ÊTRE REVISÉ POUR OBTENIR LA DERNIÈRE RÉVISION CONTACTER LE SERVICE TECHNIQUE DE TYCO ELECTRONICS SNE SAS 4220 LEVREY-CHAMBERTIN, FRANCE</small>		DWN /DESSINE ROYER	16-Jan-98	 TE connectivity SIMEL PRODUCTS	
DIMENSIONS: mm		CHK/VERIFIE -	APVD/APPROUVE -		
		TOLERANCES UNLESS OTHERWISE SPECIFIED PER TOLERANCES NON SPECIFIEES SELON :-		PRODUCT SPEC SPEC. PRODUIT 02BFC0031	SIZE FORMAT A3
MATERIAL MATIERE		FINISH FINITION		APPLICATION SPEC SPEC. APPLICATION -	CAGE CODE 00779
ITEM:		WEIGHT MASSE APPROX. 15 Kg		DRAWING NO No PLAN ©=706625	RESTRICTED TO RESERVE A -
CUSTOMER DRAWING /PLAN CLIENT			UNIQUEMENT POUR REFERENCE	SCALE ECHELLE 2/3	SHEET FEUILLE 1 OF DE 1
					REV C